

# Digital Photo Frame Troubleshooting

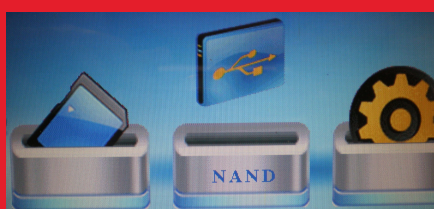
## *How to save files to the Digital Photo Frame internal memory*

### **How to copy files from PC to the Digital Photo Frame's internal memory** (Check your model supports internal memory)

The easiest way to copy files to the DPF is to connect the DPF to a PC using the supplied USB cable. Making sure the DPF is powered on, connect the supplied USB cable to the DPF and the other end to a PC. Using file manger, you will notice an external device has been detected and you can now copy files to it the same way as you would do when using a USB flash drive.

### **How to copy files from external media to the Digital Photo Frame's internal memory**

1. If you have data on an external device like an SD card or USB flash drive you can transfer this directly to the DPF's internal memory. Firstly you need to locate the files, by pressing EXIT on the remote control you should be able to get back to the main root menu. (images below may vary depending on DPF model)
2. Select appropriate external media, SD/MMC or NAND (USB)



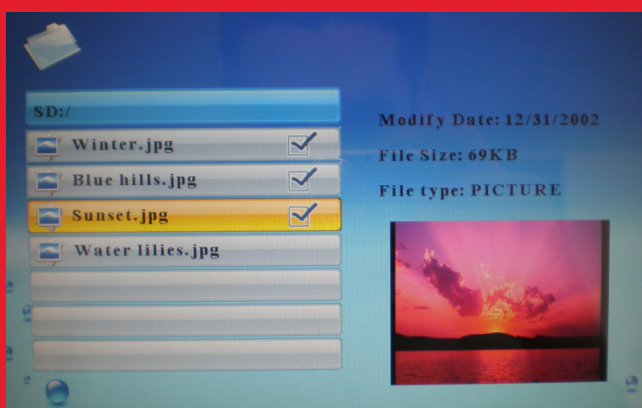
Once selected, another menu will appear with varying options, please select EDIT



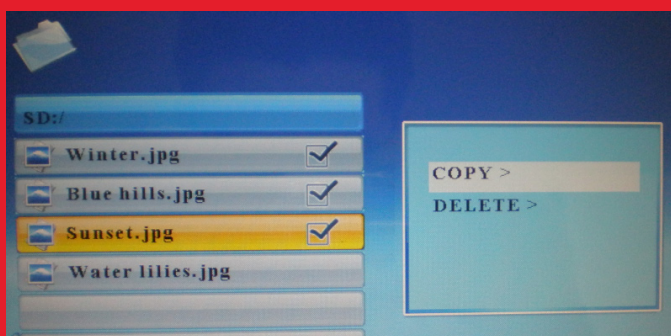
# Digital Photo Frame Troubleshooting

## *How to save files to the Digital Photo Frame internal memory*

3. Within the EDIT menu you should now see all the supported files that are located on the external device. Using the remote control, select the files one at a time using the right arrow key to select them. It will place a tick next to the file if done correctly.



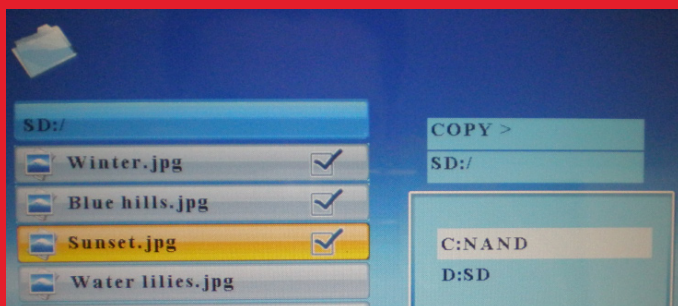
4. To proceed press the MENU button on the remote control and select the operation you wish to perform. At this stage selecting Delete will permanently remove the contents located on your external storage device. If you select copy using the ENTER key on the remote control, it will allow you to transfer the files to the internal memory for safe keeping.



# Digital Photo Frame Troubleshooting

## *How to save files to the Digital Photo Frame internal memory*

5. Selecting the COPY option will prompt you to copy the files to \NAND (Internal memory) so you can play them without the external media card. Press the right arrow key on the remote control to begin the copy process, followed by the ENTER key to confirm



6. If the copy has been successful, you should see the Finished icon appear. From here you can now go back to the main menu and view the files from the internal memory.

